



## MultiAdjust Small User Guide

UI

The MultiAdjust Small is an adaptable chair designed for individuals who require a combination of comfort, function, postural support and pressure care. This chair can be used in multi-user environments or for individual users due to its adjustability and range of accessories.

The MultiAdjust Small is an effective seating solution for children and smaller adults with the following conditions and postural challenges:

- Neurological and neuromuscular conditions
- Cardiovascular conditions
- Orthopaedic conditions
- Frail and elderly
- Pelvic instability
- Contractures
- Semi-ambulant and non-ambulant

And suitable for the following environments:

- Domestic and home care
- Educational settings
- Hospital wards and rehabilitation centres
- Hospices and respite care
- Nursing and residential homes



### **WARNING**

A level of supervision appropriate to the user's abilities should be applied at all times.

## Index

Page	Contents
3	Introduction & Features
4	Technical Information
5	Braking System
5	Tilt-in-Space
6	Back Angle Recline
6	Seat Depth
7	Seat Cushion Removal
8	Seat Width
8	Arm Rest Height & Removal
9	Seat Height
10	Back Height
11	Leg Rest Elevation
11	Leg Rest Angle
12	Height and Angle Adjustable Footplate
13	Headrest (Optional Accessory)
14	Positioning Aids (Optional Accessory)
15	Tray (Optional Accessory)
16	Pommel (Optional Accessory)
17	Contoured Back (Optional Accessory)
18	Laterals (Optional Accessory)
21	Care & Maintenance
22	Identification

## The MultiAdjust Small Chair

Most adjustments on the MultiAdjust Small can be made quickly and easily using no tools. When set up correctly the MultiAdjust Small should:

- Support the user in a comfortable position.
- Promote the user's functional ability.
- Provide appropriate postural stability and pressure management.
- Enable smooth and precise operation of the Tilt-in-Space, Back Angle Recline and Leg rest Elevation features.

For the MultiAdjust Small to perform effectively it is essential that an assessment has taken place and that the chair has been prescribed and set up for the user based on the outcomes of the assessment.

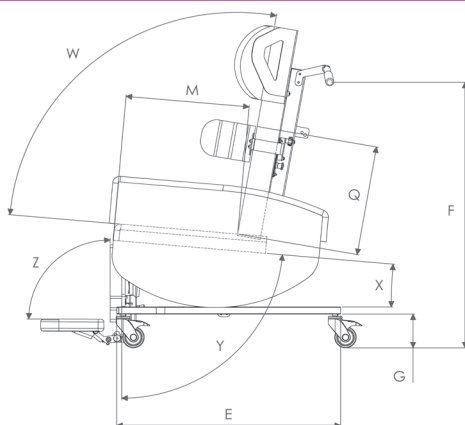
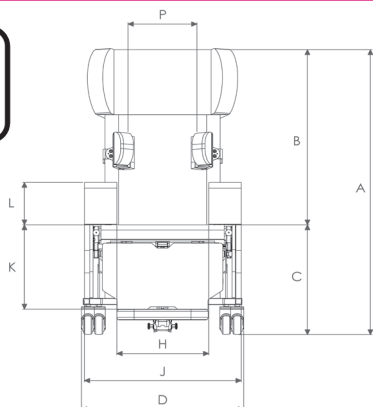
### STANDARD FEATURES

- Tilt-in-Space
- Back Angle Recline
- Elevating & Negative Angle Leg Rest
- Flip Up & Angle Adjustable Footplate
- Integral Seat Depth Adjustment
- Integral Seat Width Adjustment
- Integral Arm Height Adjustment
- Four Seat Height Options (Factory Set)
- Two Integral Back Height Adjustments
- Removable Arms
- Pressure Redistributing Reflexion Foam Seat Cushion
- Reflexion Foam Flat Back
- Four Braked Castors
- Ash Grey Upholstery with Black Vapour Permeable Material to Contact Areas

### ADJUSTMENT CONTROL OPTIONS

- Manual Only

## Technical Information



Basic Dimensions	
A: Overall Height	1200 mm (47")
B: Back Height	Low: 650 mm (25.5") High: 750 mm (29.5")
C: Seat Height Options	380 / 405 / 430 / 455 mm (15 / 16 / 17 / 18")
D: Castor Frame Width	590 mm (23")
E: Overall Length	790 mm (31")
F: Push Bar Height	1005 mm (40")
G: Clearance Height	115 mm (4.5")
Maximum User Weight	100kg
Chair Weight	56kg (Manual)

Adjustments	
H: Seat Width (inner)	330 mm (13") to 480 mm (19") (150mm range) Two Cushion Sizes Standard: Seat Widths 330 - 430 mm / Wide: Seat Widths 430 - 480 mm
J: Max Width (outer)	720 mm (28")
K: Seat to Footplate Height	Low: 280 mm (11") to 430 mm (17") High: 320 mm (12.5") to 470 mm (18.5") (150 mm range) Two Leg Rest Sizes Standard: Seat Heights 380 - 405 mm / Long: Seat Heights 430 - 455 mm
L: Arm Height	170 mm (7") to 220 mm (9") (50 mm range)
M: Seat Depth	320 mm (12.5") to 490 mm (19") (170 mm range)
P: Narrow Lateral Width	160 mm (6") to 260 mm (10") (100 mm range)
P: Regular Lateral Width	255 mm (10") to 355 mm (14") (100 mm range)
Q: Lateral Height	310 mm (12") to 430 mm (17") (120 mm range)
W: Back Angle Recline (BAR)	95° to 125° (30° range)
X: Tilt-in-Space (TiS)	Factory Setting: 0° to 30° (30° range) Optional Setting: -5° to 25° (30° range)
Y: Leg Rest Angle	Factory Setting: 65° to 145° (80° range) Optional Setting: 80° to 170° (90° range)
Footplate Depth	Small: 220mm (9") Standard: 260mm (10")
Footplate Width	Small: 340mm (13") Standard: 430mm (17")
Z: Footplate Angle	Four Positions: 75° / 90° / 105° / 120°

(All measurements ±10mm / 5°, Inches rounded)

## 1. Brakes

- To locate the brakes, push the chair forward so that the rear and front castors swing around and the brakes can easily be accessed.
- Use the foot to press down on the end of the blue brake lever to lock the castors.
- Gently knock upwards on the top of the blue brake lever to unlock the castors.



**Always brake the castors before transferring the user on or off the chair.**



Apply the brakes by pressing down the ends of the blue levers on all four castors.

## 2. Tilt-in-Space\*

Tilt-in-Space is controlled with the lever on the right hand side of the push handle at the back of the chair:

- To adjust the angle of tilt, squeeze the lever and tilt the chair to the desired angle. Release the lever to lock the chair at the desired angle.



**Do not attempt to raise the user to a standing position when the chair is tilted backwards.**



The lever on the right side of the push handle operates the Tilt-in-Space (TiS).

## 3. Tilt-in-Space - Angle Setting

To adjust the setting of the Tilt-in-Space (TiS) angle, loosen and remove the nut and bolt located underneath the chair on the central bar and move to the desired hole (position A is selected in the image).

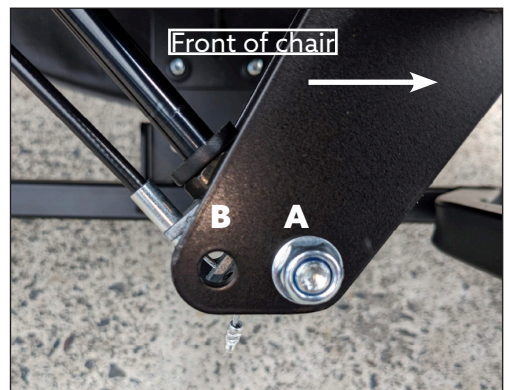
**Manual Chair**

**A:** 0° to 30° (standard factory setting 1)

**B:** -5° to 25° (optional setting 2)



**It is recommend that the Tilt-in-Space angle setting is only changed to the optional setting on the recommendation of a Health & Social Care Professional.**



Located underneath the chair at the bottom of the gas strut.

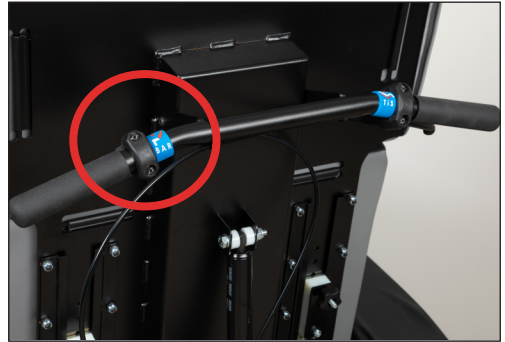
## 4. Back Angle Recline\*

Back Angle Recline (BAR) can be used to adjust the angle between the seat and back, thus changing the angle of the user's hips. When the back is fully upright, the user's hip angles will be approximately 95°; in combination with the contoured profile of the back, this will enable a comfortable position for mealtimes, activities and for preparing to raise to standing. The back angle can be reclined to 135°; this promotes a comfortable position for resting.

- It is controlled with the left hand lever on the push handle at the back of the chair.
- To adjust the angle of recline, grip the handlebar firmly. With the left hand, use the index finger to locate the small locking lever which is fitted in front of the main lever.
- Once the locking lever has been activated, the main lever can then be squeezed to adjust the back angle.
- Release the lever to lock the chair at the desired angle.



**It is recommend that Back Angle Recline is only used within the ranges recommended by a Health & Social Care Professional.**



The lever on the left side of the push handle operates Back Angle Recline (BAR).

## 5. Seat Depth

Appropriate seat depth is critical to the performance of the chair and the user's postural stability. When set correctly, the user's pelvis should be positioned at the back of the chair with an approximately two-finger gap between the back of the knee and the front of the seat cushion. To adjust seat depth:

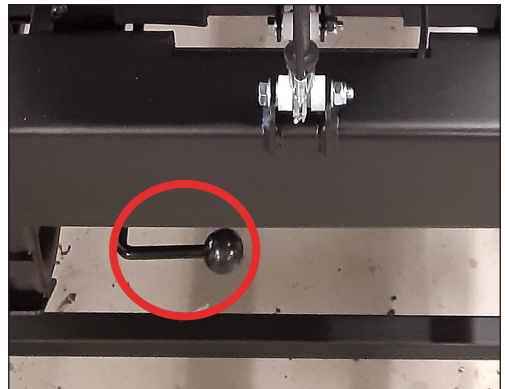
- Locate the lever at the back and left-hand side under the chair.
- Twist lever down and pull/push handle on right hand side until seat depth is in desired position.
- Release the lever and pull the handle until the seat "clicks" positively into position.



**Never adjust the seat depth when the user is in the chair.**



**Take care when adjusting seat depth to the maximum as there is potential finger trap hazard.**



The seat depth release lever is twisted down to release the locking mechanism.

## 5. Seat Cushion Removal

How to remove and refit the seat cushion on the chair:

- The seat cushion on the chair is secured to the seat base with three 'J' clips: two at the front and one at the rear.
- To locate the two 'J' clips at the front, first detach the crumb catcher from the underside of the seat cushion using the Velcro straps. This will give access to the 'J' clips. Next, pull each 'J' clip down to unclip it from the seat base metalwork.
- To remove the rear 'J' clip, firstly locate it on the left hand side of the TiS gas strut and pull down to unclip. Once all three 'J' clips have been removed, the seat cushion can be removed from the chair.
- To refit the seat cushion, simply follow these steps in reverse order. Attach the rear 'J' clip first, then secure the two front 'J' clips, and finally reattach the crumb catcher to its Velcro straps.



1) Location of the three 'J' Clips



2) Disconnect the crumb catcher from the front of the seat cushion.



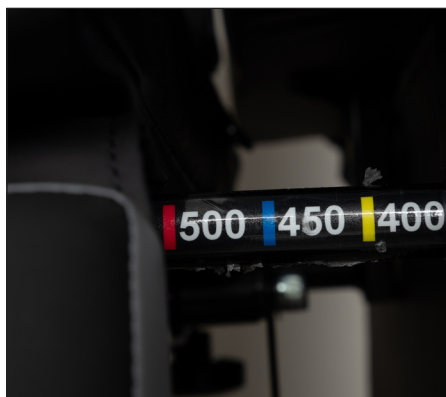
3) Revealing the two front 'J' Clips



## 6. Seat Width

Correct seat width is important for the user's lateral stability. To adjust seat width, each arm rest can be moved in or out:

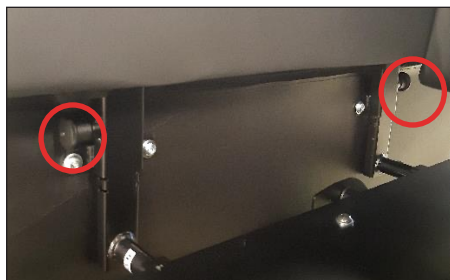
- Locate the two hand wheels; one is located at the front of the seat base and one at the rear.
- Turn in clockwise direction to loosen.
- To reduce seat width, move the arm rests inwards to the centre of the chair by placing the palm of the hand on the outside face of the arm rest and push.
- To increase seat width, move the arm rests outwards by placing the palm of the hand on the inside face of the arm rest and push.
- Once the desired seat width is achieved, turn the hand wheels in anti-clockwise direction to lock the arm rests in position.
- Arm rests can be set at different seat widths from front to back and left to right, which may be indicated for users with fixed lower limb postures such as windsweeping, or those with increased body mass in the gluteal and hip areas.



The MultiAdjust Small has a width size guide on each arm to assist with adjustments.

## 7. Arm Rest Height and Removal

- To adjust arm rest height, locate the two plunger pins located on the inside of the arm rest; one towards the front and one towards the rear.
- With a plunger pin in each hand pull out.
- Slide the arm up or down, to adjust to the desired height.
- Release the plunger pins to lock into position.
- Arm rest height can be set differently from front to back resulting in angled arm rests, which may be indicated for users with specific upper limb positioning requirements.



Plunger pins located on the inside of the arm rest.



**Arm rest height should be based on the outcome of the user's assessment; please refer to these measurements or seek further guidance from the Health & Social Care Professional.**

The arm rests can be removed to aid user transfers, positioning, cleaning and servicing:

- Locate the two hand wheels; one is located at the front of the seat base and one at the rear.
- Turn in clockwise direction to loosen.
- The arm rest can then be removed completely.



Location of the hand wheels underneath the seat base for seat width and arm removal.



## 8. Seat Height

- If the user can raise to standing themselves or with assistance, the seat height should be set so that the user's feet are supported on the floor and the underside of their thighs are in contact with the full length of the seat cushion.
- If the seat height is too high, the user's heels may be lifted off the floor and pressure will build up along the underside of their thighs. If the seat is too low, their knees will be raised and there will be no contact between the back of their thighs and the seat cushion, increasing the pressure on their pelvis and sacrum.
- If the user is less ambulant then the seat height can be set reference to the footplate, again ensuring the foot is fully supported.
- The MultiAdjust Small will have been measured at assessment and manufactured to the optimal dimensions.

### 8a. Seat Height Adjustments

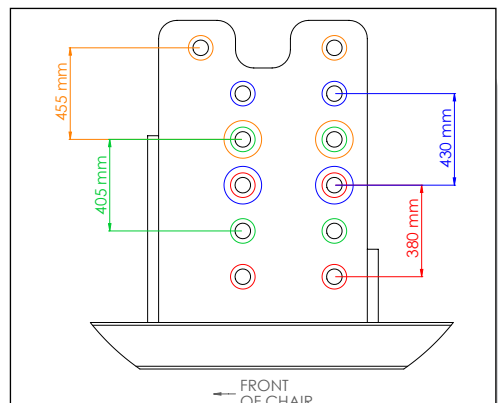
- If further adjustment is necessary, remove both armrests and carefully place chair on its side. Remove the four bolts on either side using a 13mm spanner and reposition into the desired holes, repeat on the other side.
- See diagram below for seat height bolt positions.



**This should only be carried out by a trained individual or Technician.**



Seat height adjustment bolts.



Seat height measurements.

## 9. Back Height

The MultiAdjust Small has two options of back height to provide postural support where needed at the right height.

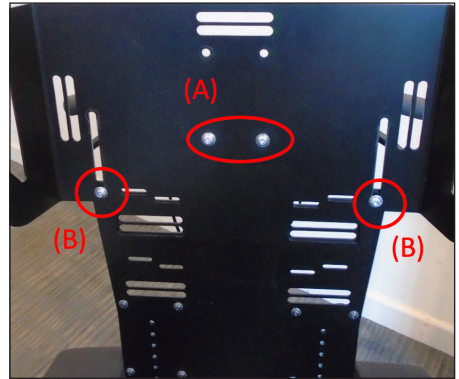
- High: 750 mm (standard factory setting)
- Low: 650 mm (optional setting)

### 9a. Back Height Setting

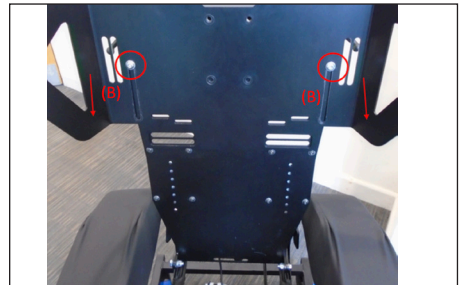
- Located behind the upper (i) & lower (ii) back cushions which need to be removed from the chair.
- To adjust the setting of the back height, locate, loosen & remove the two central bolts & washers (A).
- Loosen the two outer bolts (B) in the slots & move the top section of the back up/down to the new desired setting.
- Tighten the two outer bolts (B). Reinsert & tighten the two central bolts & washers (A) into the newly aligned central holes.
- Refit the upper (i) & lower (ii) back cushions to the chair.



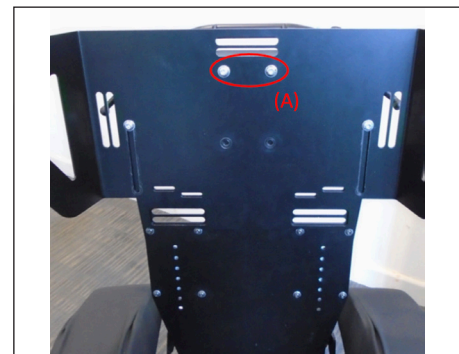
**It is recommended that the back height setting is only changed on the recommendation of a Health & Social Care Professional.**



2) Locate central (A) & outer (B) fixing bolts. Unscrew and remove the two central bolts and washers (A).



3) Loosen the two outer bolts (B) in the slots, and then shift the top section of the back up or down accordingly. (As an example, 750mm to 650mm is shown).



4) Tighten two outer bolts (B), and reinsert and tighten two central bolts & washers (A) into the newly aligned central fixing holes (A).



1) Remove upper (i) & lower (ii) back cushions to give access to back height adjustment.

## 10. Leg Rest Elevation

The leg rest can be elevated to promote comfort during periods of rest, or to achieve a change of position:

- Locate lever at the right-hand side of the leg rest.
- Squeeze the lever then lift or lower the leg rest to the desired angle.
- Release lever to lock the position.
- To lower the leg rest, pull the lever out and the leg rest will return to its lowered position; it may be necessary to push the leg rest down.



**Never leave the user unsupervised in the chair with the leg rest elevated.**

**Leg rest elevation should only be used within the ranges tolerated by the user based on their knee range of movement and should not affect pelvic stability.**



Locate the lever on the right side of the chair to adjust leg rest elevation.

## 11. Leg Rest - Angle Setting

Located underneath the chair on the front end of the seat base towards the leg rest.

To adjust the setting of the leg rest angle, loosen and remove the nut and bolt then move to the desired hole (position B is selected in the image).

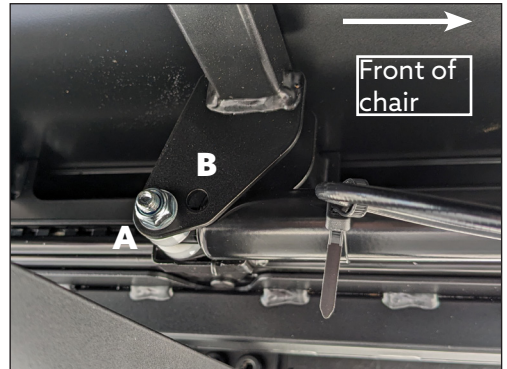
### Manual Chair

**A:** 65° to 145° (standard factory setting 1)

**B:** 80° to 170° (optional setting 2)



**It is recommend that the leg rest angle setting is only changed to the optional setting on the recommendation of a Health & Social Care Professional.**



The leg rest angle nut and bolt is located on the underside of the seat base.

## 12. Height & Angle Adj. Flip-up Footplate UK Patent Approved GB 2589439

Foot support is important for the user's comfort, postural stability and pressure distribution. The MultiAdjust Small footplate is also suitable for users with a longer lower leg length. The footplate is fixed into a bracket on the back of the leg rest. To insert and adjust the footplate height:

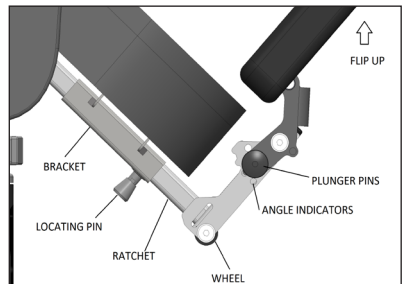
- Pull out the locating pin on the bracket and insert the footplate.
- Slide the footplate up or down to adjust to the desired height.
- Release the locking pin; the pin should 'click' into position when the footplate is properly located.
- Note that the footplate stem has a ratchet and wheel safety feature. This ensures that should the footplate come into contact with the floor it will rise up out of the way maintaining chair stability. The wheel offers some protection to the flooring.



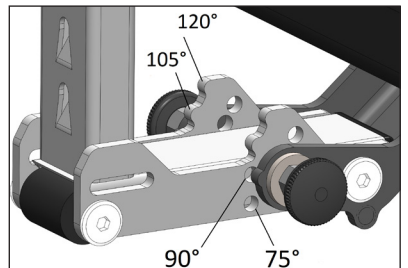
**The ratchet feature is predominantly for safety, we advise that the footplate height is reduced by hand every time the leg rest is lowered.**



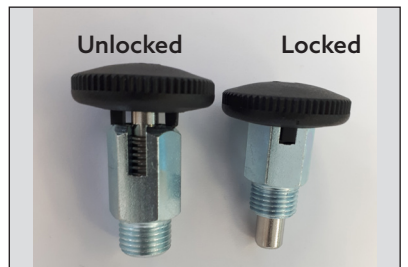
The footplate fits into the bracket on the back of the leg rest.



Parts of the footplate.



Locating the plunger pin



**Keep fingers away from the mechanism when performing this task to avoid any potential finger traps.**

The footplate can be adjusted and set to a choice of 4 positions; 75°, 90°, 105° & 120°. This equates to a 120° range of adjustment. In all angled positions the footplate can be easily lifted up to 0° (vertical) to move it out of the way.

## Optional Extras

### 13. Headrests (Optional)

The headrest should support as much of the user's head as possible and the height of the headrest should be set to provide comfortable support.

- Each headrest has a strap attached to its top edge. The straps have short strips of plastic hooks sewn at intervals along its length.
- It can be adjusted up and down via the strap, the plastic hooks simply click onto the slots on the back of the chair.



Various headrest types are available for the MultiAdjust Small but they all fix the same.



Loop the headrest strap around to the back of the chair.



## 14. Pelvic Belt\* (Optional)

Pelvic belt length is adjusted by the two part buckle and a 'tri-glide' adjuster:

- To fasten buckle 'click' two halves together.
- To release buckle, press tabs on the sides of buckle and pull two halves apart.
- A 4-Point Pelvic Belt is also available.



**Please see \*Disclaimers at end of User Guide for further safety information on all positioning aids.**

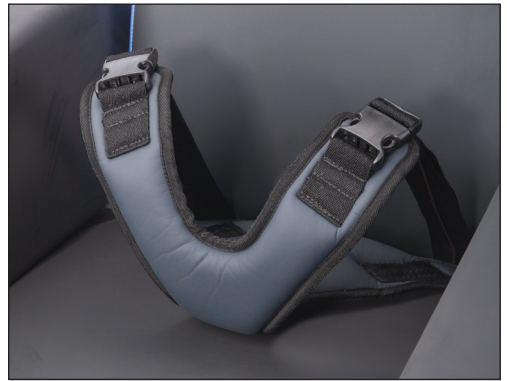


The two halves of the pelvic belt buckle.

## 15. Groin Harness\* (Optional)

The groin harness is a positioning aid that can provide maximum pelvic control to help stabilise the position of the pelvis and prevent the user from sliding forward in the chair.

- The harness consists of a padded cross shape and webbing straps. Two points of the padded cross shape are attached at the junction between the seat and back cushions.
- When seated in the chair, the two loose ends of the harness should be pulled up over the users thighs and attached to the straps at the rear of the chair.
- The harness can be adjusted through the webbing straps.



Groin harness to stabilise pelvic position in the back of the seat.

## 16. Dynamic Chest Harness\* (Optional)

A dynamic chest harness can provide anterior support and comfort whilst not restricting active positioning or function.

- The dynamic chest harness is held in position with a strap from each corner, two straps attach at the users waist and two over their shoulders.
- These straps are attached to the harness with side-lock buckles, the length of the straps can be adjusted through the buckles.



**Always ensure the harness is positioned correctly and comfortably, not over-tightened and not interfering with in-situ medical devices.**



Dynamic chest harness provides support to the upper trunk.

## 17. Tray (Optional)

The MultiAdjust Small can be fitted with a tray, which can be used to assist in the user's upper limb positioning and engagement in activities; it should never be used as a restraint.

- Once the occupant is sat in the chair, rest the tray across the arm rests so that the tray fits snugly against the user but does not press in to their abdomen.
- The buckles on the tray straps connect with the buckles on the inside of the chair sides. Clip the two halves of the buckles together on all four straps.
- Adjust the tension in the tray straps to secure the position of the tray. Then tension can then be adjusted to change the front-to-back position of the tray.



**Always ensure that the tray does not interfere with any stoma devices, feeding tubes or similar devices fitted into the user's abdomen.**



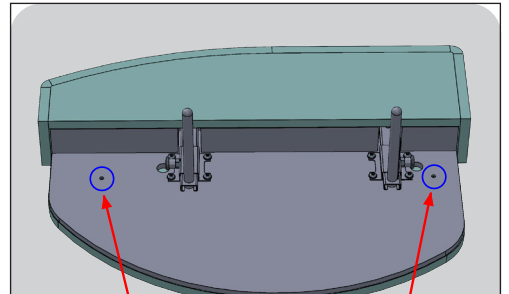
Straps on front and rear of tray fastened into buckles in the inside of the arm rest.

### 17a. Retrofitting Tray Straps

If a chair is ordered with a tray, both armrests will come fitted with the appropriate tray attachment straps. Attachment straps will need to be fitted to both armrests of the chair when a tray is ordered retrospectively.

To attach the straps to each armrest, please follow the instructions below:

- Remove each armrest from the chair and lay down with the insides facing up.
- Find two small holes behind the vinyl cover (shown on the diagram circled in blue) with a finger. The vinyl will need to be pierced through into these holes with a small screwdriver to access the fixing hole behind.
- At the end of each strap is a black plastic bracket; using a 4mm hexagon key, secure each one with an M6 screw and washer into each fixing hole in the armrest.
- With the straps hanging downwards, refit both armrests to the chair.
- The tray straps can now be clipped into the armrest straps.



Two holes are located as per the blue circles above.



Armrest fitted with both tray attachment straps.



## 18. Pommel (Optional)

A pommel can be used to aid thigh positioning to promote postural alignment and pressure care. The pommel is designed to separate and support the whole inside of the knee joint; for this reason the pommel is not depth adjustable and is positioned out in front of the seat edge.

- Fit the pommel with the leg rest angled down as this will give the best access to the bracket.
- Locate the cut-out in the bottom front edge of the seat cushion; the opening for the pommel bracket is located in this cut-out.
- Fit the metal stem of the pommel into the bracket and push the pommel until it is felt to 'click' into position.
- To remove the pommel, hold it at the bottom edge of the metal stem and pull directly outwards.



Fit the pommel into the bracket in the middle of the bottom edge of the seat.



**A pommel must never be used as a restraint and the user must not be allowed to slide into sacral sitting and come to rest against the pommel.**

### 18a. Retrofitting a Pommel

If a chair is ordered with a pommel, it will be supplied with the bracket already fitted to the chair. If a pommel is ordered retrospectively, a bracket will also need to be ordered. To fit the pommel receiving bracket, please follow the following instructions:

- Remove the seat cushion.
- Locate the fixing holes at the front of the seat base.
- Insert each fixing bolt with one washer from above so that the bolt goes through under the base.
- Place the pommel receiving bracket over the bolt ends and fix it in place using a washer and nut provided. Do this one bolt at a time for ease.
- Ensure the receiving bracket is securely fitted; the pommel can be slotted into the pommel receiving bracket.

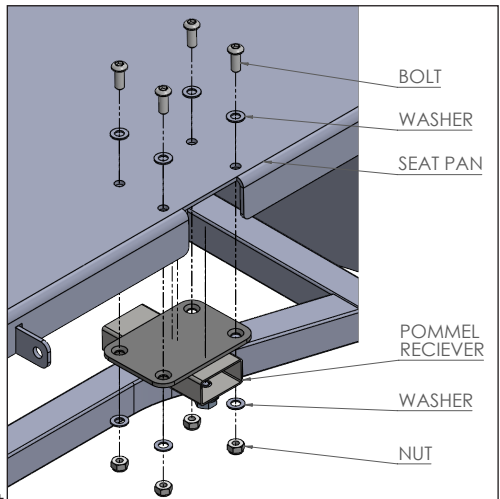


Diagram showing components of the pommel receiving bracket.

## 19. Contoured Back (Optional)

A contoured back option is available, providing lateral support to assist with leaning postures and give additional control during upper trunk movement.

The contoured back consists of a medium-density Reflexion® foam profile with sculpted sides to support the trunk. This lateral support is positioned above the top of the armrest, allowing the seat width adjustment system to provide appropriate pelvic stability.

The contoured back can be rotated 180° to offer two different height options for the sculpted lateral sides.

The contoured back is available in two heights, depending on the back height, 650mm & 750mm.

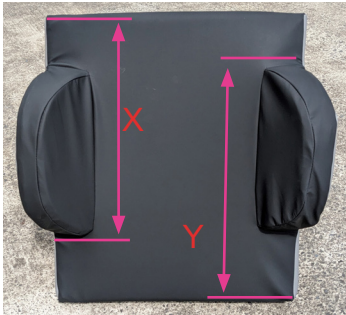


A fitted contoured back cushion.



Can be rotated 180° to achieve two different lateral support heights.

Height Measurement (seat cushion to top of lateral)	650mm Contoured Back	750mm Contoured Back
Position 1 (X)	280 mm	350 mm
Position 2 (Y)	310 mm	400 mm



## 19a. Retrofitting the Contoured Back

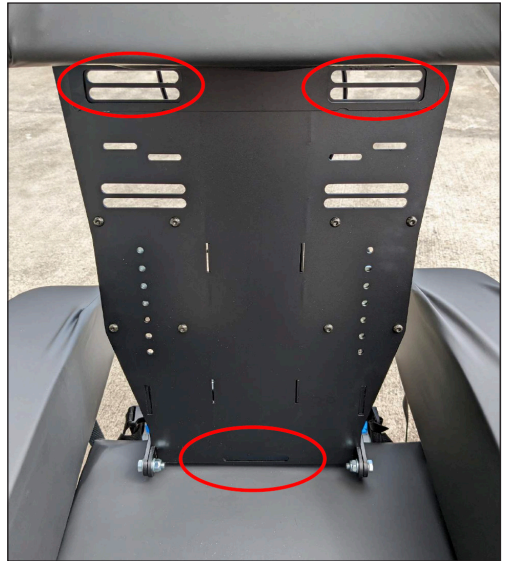
A contoured back can be fitted to a chair initially ordered with a flat back or as a replacement. The Reflexion® profiled contoured foam back comes complete with a cover.

### Fitting instructions:

- To detach the current flat or contoured back from the chair, locate the plastic 'J' strips clipped into the metal fixing slots at the chair's rear and unclip the 'J' strips from the slots.
- Select the correct orientation of the new contoured back by rotating the cushion 180° to select between the two different lateral support height options\*.
- Reattach the contoured back in the desired orientation back to the chair by clipping the 'J' clips into position, two in the top corners & one centrally at the bottom.
- There are six 'J' clips on the rear of a contoured back cushion, of which three will be attached by fitting into the chair metalwork depending on orientation.



**\*Ensure the correct orientation has been selected for the user as per the advice of a Health and Social Care Professional; a comprehensive seating assessment with a contoured back will determine at what height lateral support is indicated at the trunk.**



Location of rear fitting slots.

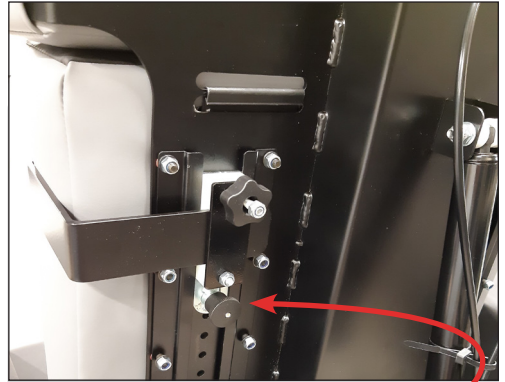


Contoured back with a selection of 'J' clip locations for fitting, depending on rotation.

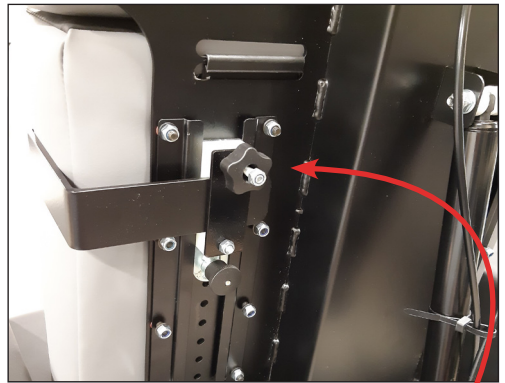
## 20. Laterals (Optional)

Lateral supports are available in a narrow, regular and wide setting. Lateral supports are usually adjusted so that they are supporting the user's trunk; however, this depends on where support is required based on assessment outcomes.

- Lateral supports should be positioned to support the user in an upright position and limit leaning at the trunk. For comfort leave a three-finger gap between the top of the lateral and the user's armpit.
- Before transferring the user into the MultiAdjust Small take a measurement of the height of any lateral support they have fitted to a wheelchair or activity chair. Otherwise, try to measure from seat to mid-chest height as a guide. Position the lateral supports accordingly.
- Similarly, measure the distance between the lateral supports on the user's wheelchair or measure across their chest so that the width between the lateral supports can be set-up before transfer.
- To adjust lateral height, pull out the lower knob on the adjustment block fitted to the back of the chair. This knob controls the indexing pin which locks into the holes in the height adjuster. Raise or lower the lateral pad to the desired height and release the knob. Push the lateral down until the indexing pin is felt to lock in place.
- Width is controlled by the clamp plate on the adjustment block. Turn the hand wheel on the adjustment block until the lateral is free to slide sideways. Once in the desired position tighten the hand wheel to lock the pad in place.
- If the MultiAdjust Small is to be used without the adjustable lateral supports undo the hand wheel controlling the width adjustment and slide the laterals completely out of the adjustment blocks. Keep the laterals in a safe place for future use.



Pull out the lower knob to adjust lateral height.



Turn the hand wheel to adjust lateral width, tighten the hand wheel to hold the setting.



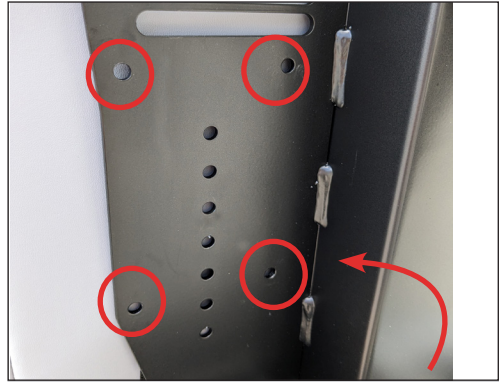
Standard and kidney pads available in small and medium.



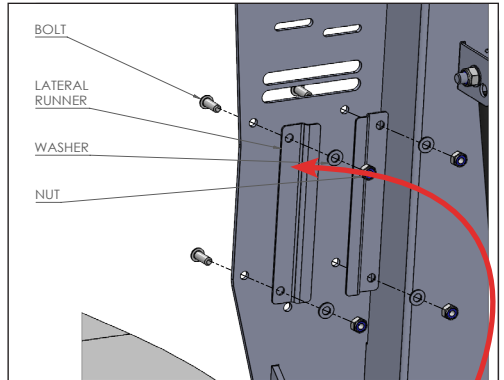
## 20a. Retrofitting Laterals

If a MultiAdjust Small has originally been ordered with laterals, the chair comes fitted with the rear lateral runner brackets. If laterals are ordered retrospectively, lateral runners will need to be fitted. Please follow these steps to fit the lateral runners to the rear of the chair:

- Remove the flat back cushion (as a general rule, laterals are not designed to be used with the contoured back).
- Locate four fixing holes in the back plate that run down on each side of the back of the chair.
- Insert the fixing bolts from the front of the chair through the back plate, so the bolt head sits against the back cushion (see diagram right).
- Locate the lateral runner over the ends of the bolts and fix it in place, securing tightly with four washers and nuts.
- Repeat the process on the other side with the second lateral runner.
- Once the lateral runners are fitted, the lateral height adjusters can be inserted into the runners, and a lateral arm can be mounted and secured into each height adjuster.



Locate four lateral runner bracket holes on the left and right hand side on the back of the chair.



Push the four bolts through from the cushion side and secure with washers and nuts at the back.



Correctly fitted lateral runner.

## LOOKING AFTER The MultiAdjust Small

### Care & Maintenance

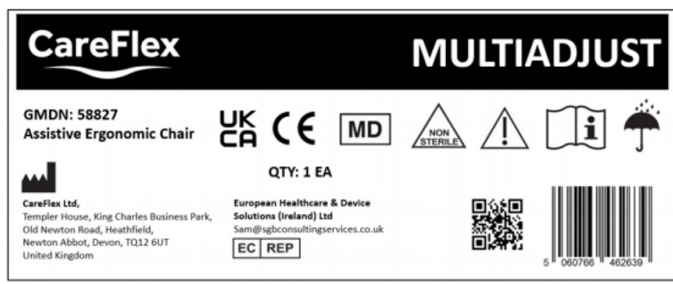
- When the chair is delivered and every time it is used, check the chair over for signs of damage or excessive wear.
- If the chair shows signs of excessive wear, damage or incorrect performance, please take it out of service immediately and contact CareFlex or the local CareFlex Distributor.
- If the user is experiencing severe discomfort, do not use the chair. Take it out of service immediately and contact CareFlex or the local CareFlex Distributor.
- The MultiAdjust Small is upholstered in high quality material which is waterproof and fire retardant. However, do not store or use the chair in damp or wet areas.
- Do not attempt to carry out any structural maintenance or adjustment of the MultiAdjust Small or its accessories without consulting CareFlex or the local CareFlex Distributor.

Details of cover material care and maintenance can be found in the Fabric Guide. Both are available in hard copy on request from CareFlex, or are free to download at [www.careflex.co.uk](http://www.careflex.co.uk).

**Look after the MultiAdjust Small and it will provide years of trouble-free service.**

## Identification

Each MultiAdjust Small chair has a unique chair number which must be quoted during any correspondence with CareFlex or the local CareFlex Distributor. This is on a white label on the back of the chair.



## Important Safety Information

- All those using, providing, setting-up or adjusting the MultiAdjust Small chair should take the time to familiarise themselves with all aspects of the chair, including its functions and accessories, before using the chair.
- Do not 'ride' on the push handles or subject them to excessive loads.
- Do not sit on the leg rest or subject it to excessive loads.
- Do not attempt to stand on the footplate.
- Do not tip the chair backwards to ascend steps or overcome thresholds, especially if a user is sat in the chair.
- Always ensure that the user's feet do not drag on the ground when the chair is moved by elevating the leg rest to lift their feet off the floor or using the footplate.
- Always ensure that there are no obstructions under the chair and that there is plenty of space around the chair before using the Tilt-in-Space and Back Angle Recline functions.
- Always apply at least two brakes when the user is transferred to or from the chair.
- Always try to avoid storing or using the chair in areas where it may obstruct exits or passageways.
- The MultiAdjust Small must never be used in motor vehicles for user transportation.

### \*Disclaimers

Tilt-in-Space and Back Angle Recline should always be prescribed responsibly, ensuring that they are safe and appropriate for the user following a comprehensive assessment of posture and risk, with advice sought from the multi-disciplinary team where indicated. In some cases, these functions will be contra-indicated, and they could also increase shear and friction forces.

All belts and harnesses (positioning aids) must be prescribed, implemented, and monitored responsibly following a comprehensive risk assessment. Please see the following for further information:

- Medicines and Healthcare Regulatory Agency (MHRA) (2015) *MDA/2015/018 All posture or safety belts fitted to supportive seating, wheelchairs, hoists and bathroom equipment* London: MHRA
- British Standard (BS) (2019) *8625:2019 Selection, placement and fixation of flexible postural support devices in seating* London: BSI



Notes

Write the CareFlex Chair Number Here:

\_\_\_\_\_



Scan me to  
watch the MultiAdjust  
How-To-Videos

CareFlex Ltd. Templer House, King Charles Bus. Pk., Old Newton Rd., Heathfield,  
Devon. TQ12 6UT

Tel: 01626 836440 | [www.careflex.co.uk](http://www.careflex.co.uk) | [info@careflex.co.uk](mailto:info@careflex.co.uk)